



1520 Jabez Run
Suite 303
Millersville, MD 21108
800.451.0649

REV.	DATE
1	01/04/10
2	07/19/16

TOLERANCES
UNLESS OTHERWISE
SPECIFIED:
DECIMAL .XXX = ± .005
.XX = ± .01
FRACTION $\pm 1/16$
DEGREE ± 3°

**DORMA EASI-FRONTS DOOR SET
TYPE "P" WITH LOCK - P05-4S-01_41-RTS**

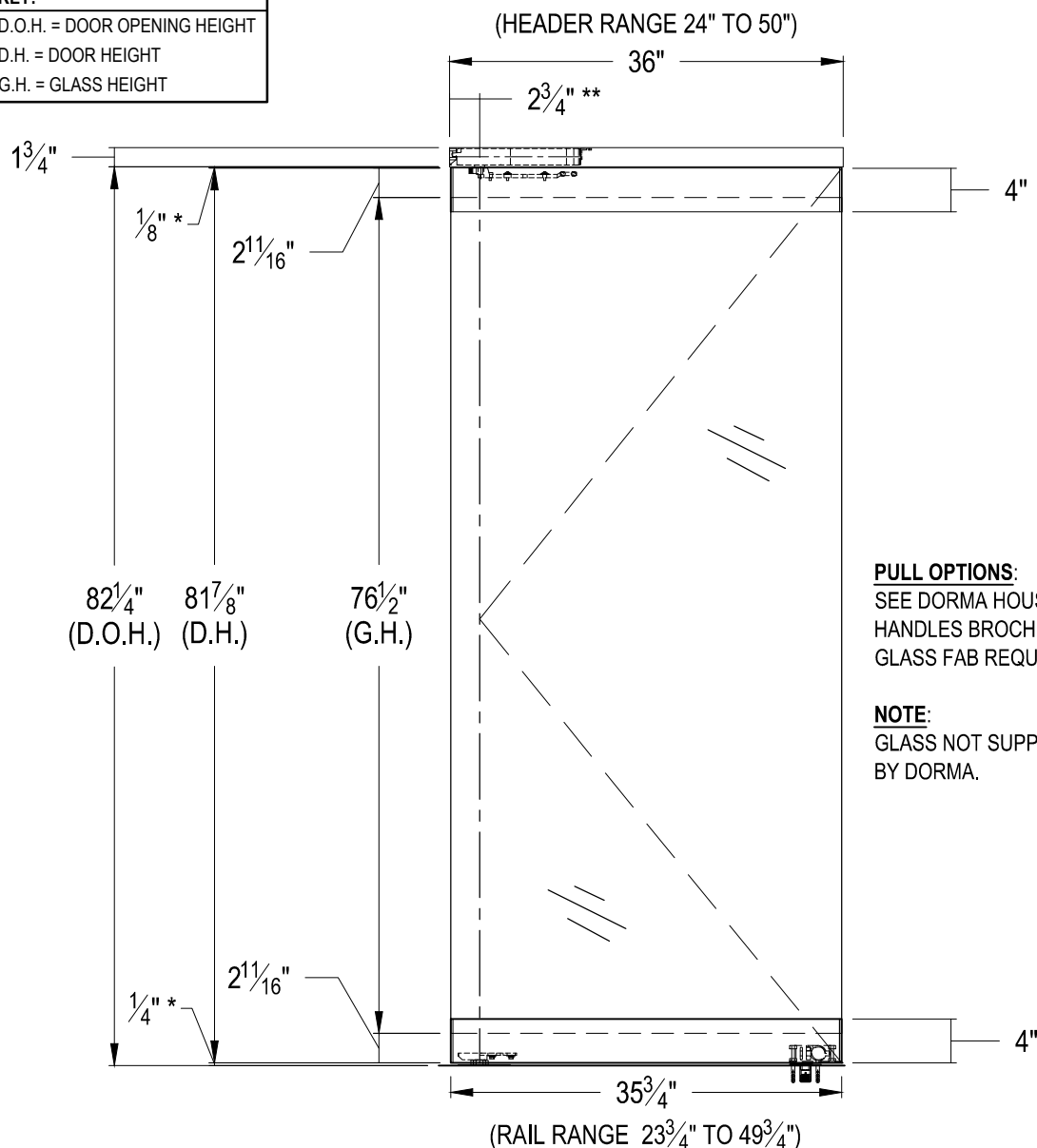
PROPRIETARY AND CONFIDENTIAL

This document and information is the proprietary property of DORMA GLAS. Any party, by accepting this document and information, assumes custody and control hereof and agrees that such is given in confidence and this document and the information set forth therein will not be copied, used or reproduced in whole or in part, nor its contents revealed to any person in any manner that would cause the loss or impairment of the owner's legal rights including, but not limited to, the owner's common law copyrights thereto.

DRAWN BY: MW
DATE: 06.19.09
SCALE: $\frac{3}{4}" = 1'-0"$
SHEET: 1 OF 3
DRAWING NO. P05-4S-01_41-RTS
DO NOT SCALE DRAWING

KEY:

D.O.H. = DOOR OPENING HEIGHT
D.H. = DOOR HEIGHT
G.H. = GLASS HEIGHT



PULL OPTIONS:

SEE DORMA HOUSINGS &
HANDLES BROCHURE.
GLASS FAB REQUIRED.

NOTE:

GLASS NOT SUPPLIED
BY DORMA.

ART. NO. P04S.5.109 (SHOWN)

SINGLE DOOR SYSTEM FOR 1/2" GLASS INCLUDES...

- QTY. 1 - #233.018 4-1/8" HEADER PREPPED FOR RTS88 CLOSER [SPECIFY FUNCTION]
- QTY. 1 - #225.401 4" TOP RAIL WITH #928.006 ARM
- QTY. 1 - #225.405 4" BOTTOM RAIL WITH #928.055 PIVOT AND #925.019 LOCK
- QTY. 1 - #225.998 MORTISE THUMBTURN CYLINDER WITH SPLIT RING
- QTY. 1 - #225.999 MORTISE KEY CYLINDER WITH SPLIT RING
- QTY. 1 - #932.033 1-1/2" DUST PROOF STRIKE

ART. NO. P04S.5.109.X

PAIRED DOOR SYSTEM FOR 1/2" GLASS INCLUDES...

- QTY. 1 - #233.020 4-1/8" HEADER PREPPED FOR RTS88 CLOSERS [SPECIFY FUNCTION]
- QTY. 2 - #225.401 4" TOP RAIL WITH #928.006 ARM
- QTY. 2 - #225.405 4" BOTTOM RAIL WITH #928.055 PIVOT AND #925.019 LOCK
- QTY. 2 - #225.998 MORTISE THUMBTURN CYLINDER WITH SPLIT RING
- QTY. 2 - #225.999 MORTISE KEY CYLINDER WITH SPLIT RING
- QTY. 2 - #932.033 1-1/2" DUST PROOF STRIKE

* OPENING CLEARANCES MAY VARY BASED ON SITE CONDITIONS. STANDARD CLEARANCES OF 1/8" USED UNLESS OTHERWISE INDICATED.

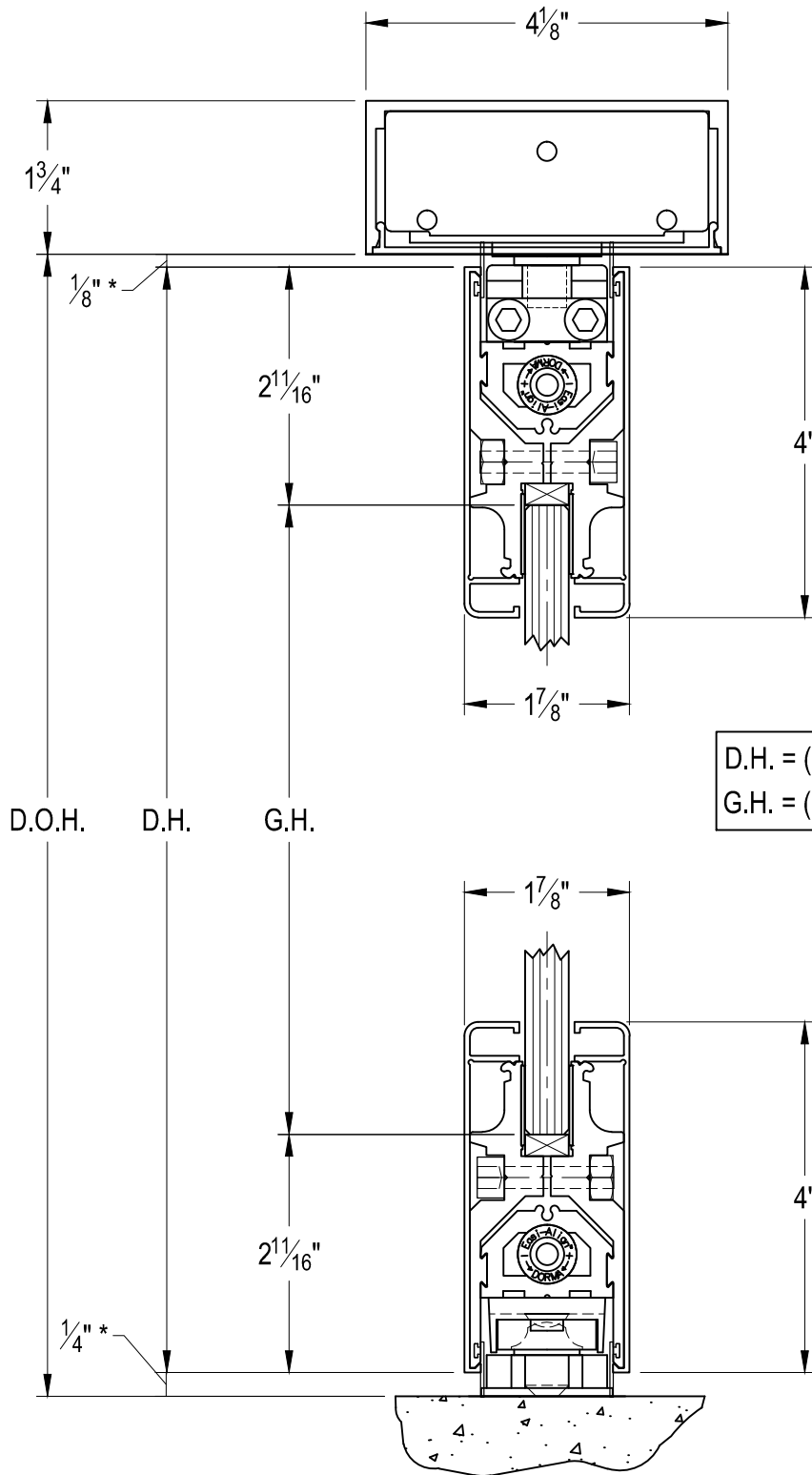
** PIVOT POINT CENTER LINE IS FROM FINISHED JAMB.

KEY:

D.O.H. = DOOR OPENING HEIGHT

D.H. = DOOR HEIGHT

G.H. = GLASS HEIGHT



1520 Jabez Run
Suite 303
Millersville, MD 21108
800.451.0649

REV.	DATE
1	01/04/10
2	07/19/16

TOLERANCES
UNLESS OTHERWISE SPECIFIED:DECIMAL .XXX = $\pm .005$.XX = $\pm .01$ FRACTION $\pm 1/16$ DEGREE $\pm .3^\circ$

DORMA EASI-FRONTS DOOR SET TYPE "P" WITH LOCK - P05-4S-01_41-RTS

PROPRIETARY AND CONFIDENTIAL

This document and information is the proprietary property of DORMA GLAS. Any party, by accepting this document and information, assumes custody and control hereof and agrees that such is given in confidence and this document and the information set forth therein will not be copied, used or reproduced in whole or in part, nor its contents revealed to any person in any manner that would cause the loss or impairment of the owner's legal rights including, but not limited to, the owner's common law copyrights thereto.

DRAWN BY: MW

DATE: 06.19.09

SCALE: 1:2

SHEET: 2 OF 3

DRAWING NO.

P05-4S-01_41-RTS

DO NOT SCALE DRAWING

* OPENING CLEARANCES MAY VARY BASED ON SITE CONDITIONS. STANDARD CLEARANCES SHOWN ARE USED IN FORMULA.

KEY:

D.O.H. = DOOR OPENING HEIGHT

D.H. = DOOR HEIGHT

G.H. = GLASS HEIGHT



1520 Jabez Run
Suite 303
Millersville, MD 21108
800.451.0649

REV.	DATE
①	01/04/10
②	07/19/16

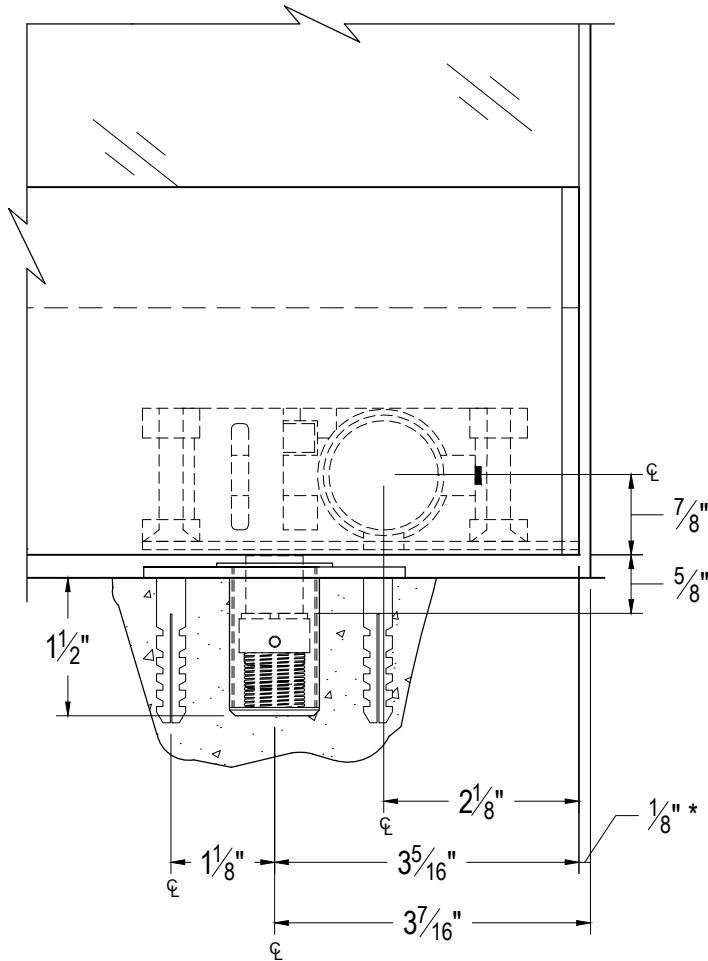
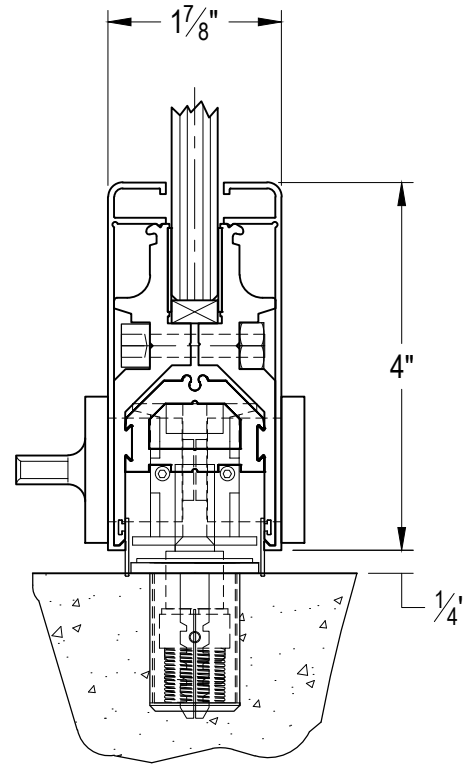
TOLERANCES
UNLESS OTHERWISE
SPECIFIED:

DECIMAL .XXX = ± .005

.XX = ± .01

FRACTION ± 1/16

DEGREE ± 3°

**ELEVATION VIEW OF LOCK LOCATION****BOTTOM RAIL SECTION
AT LOCK LOCATION****DORMA EASI-FRONT DOOR SET
TYPE "P" WITH LOCK - P05-4S-01_41-RTS**

PROPRIETARY AND CONFIDENTIAL
This document and information is the proprietary property of DORMA GLAS. Any party, by accepting this document and information, assumes custody and control hereof and agrees that such is given in confidence and this document and the information set forth therein will not be copied, used or reproduced in whole or in part, nor its contents revealed to any person in any manner that would cause the loss or impairment of the owner's legal rights including, but not limited to, the owner's common law copyrights thereto.

DRAWN BY: MW

DATE: 06.19.09

SCALE: 1:2

SHEET: 3 OF 3

DRAWING NO.

P05-4S-01_41-RTS

DO NOT SCALE DRAWING

NOTE: DIMENSIONS SHOWN INCLUDE THE ENDCAP AND THE COVER.

* OPENING CLEARANCES MAY VARY BASED ON SITE CONDITIONS. STANDARD CLEARANCES SHOWN ARE USED IN FORMULA.